

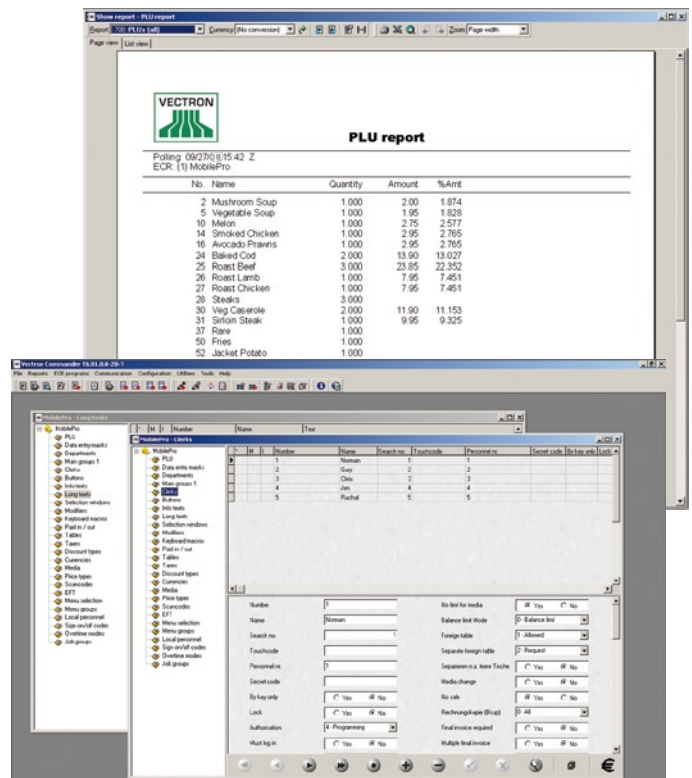
Vectron Systems

Leading in POS Technology

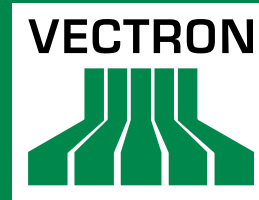
# Vectron Commander 6

## Intelligently networked

The communication software Vectron Commander connects the head office with all branch cash registers - worldwide, if desired. Simplified data administration, automated data transmission and data evaluation provide comprehensive information with a minimum of effort. Vectron Commander is the central interface to all Vectron-POS systems.



- Centralised base data administration
- Data acceptance from and data forwarding to Back Office software
- Rapid keyboard programming and creation of PLU info texts
- Automated, time-controlled transmission and reading of cash register data
- Communication via PC networks or telephone connections
- Safe cash register backup and remote maintenance
- Report generator and automatic report printing
- Processing of decentralised order- and working hour data
- Security through individual access rights
- Scalable by distributing communication in the PC networks
- Compatible with all Vectron POS systems



Vectron Systems

Leading in POS Technology

## Vectron Commander 6

### Automatic polling and transmission

Data polling, PLU and price changes are generally carried out after branch closing. The Vectron Commander communication module precisely establishes communication, records the interruption of a connection or the non-availability of a POS system in the communication journal and automatically tries again to establish communication.

### Central administration and control

The turnover data from all cash registers is individually recorded, thus providing the basis for extensive analysis and reporting. Furthermore, Vectron Commander supports the expanded features in Vectron point-of-sale systems.

### Time and attendance

Vectron Commander accepts the working hours booked at the cash registers. Along with an initial basic evaluation, it allows connection to work-time programs. That means even people who sign on and out in different outlets are registered.

### Order administration

For efficient branch ordering Commander transfers optimised lists with suggestions, which the POS systems in the outlets can either accept or adjust in detail if required. This reduces time and false input. In addition, Commander imports orders that were entered individually at the point of sale.

### Keyboard programming and operator rights

New keyboard assignments are prepared clearly grouped. If desired, they can be transmitted to numerous cash registers. Operator functions, for example the ability to permit discounts, are changed in the onsite cash register by the head office.

### Flexible connections

With Vectron Commander, Vectron cash register systems can be accessed practically worldwide. Along with analogue and ISDN connections, Commander also supports mobile communications. Onsite cash registers are connected through a serial cable. Alternatively, they use existing Ethernet structures together with a PC network.

### Security and access control

The access rights for various program sections in Vectron Commander are individually allocated. For example, those who are permitted to change PLU prices do not necessarily have access to turnover evaluations. Those who have no direct program access can, for instance, automatically obtain a filtered department report on their printer, etc.

### Scalable

The optional multi-station capability enables network application of Vectron Commander. Multiline-licences allow using several connections - modems, ISDN channels or network connection - for parallel communication with numerous POS systems.

### Report generator

The report generator enables individual report adaptation. At the same time, external data can also be linked with cash register report data to completely new reporting models. Turnover and discount analyses are further examples of the many opportunities built into Vectron Commander.

### Back Office connection

Via an open interface, Vectron Commander interacts with Back Office programs. Along with turnover and PLU base data, keyboard layouts, operator functions, PLU info texts, macros etc. can also be imported and exported. Please ask your dealer about interfaces to your specific software solutions.

